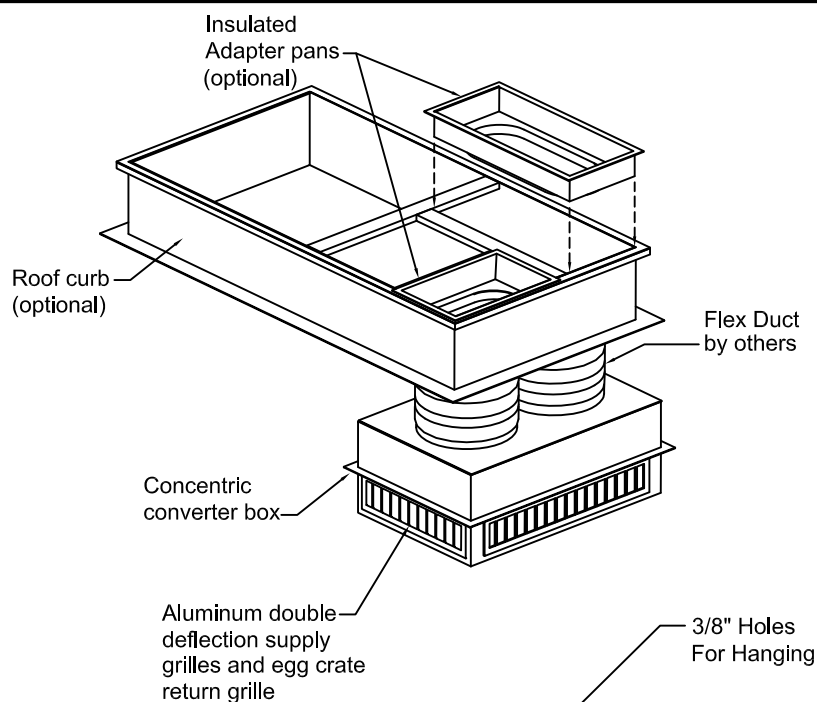
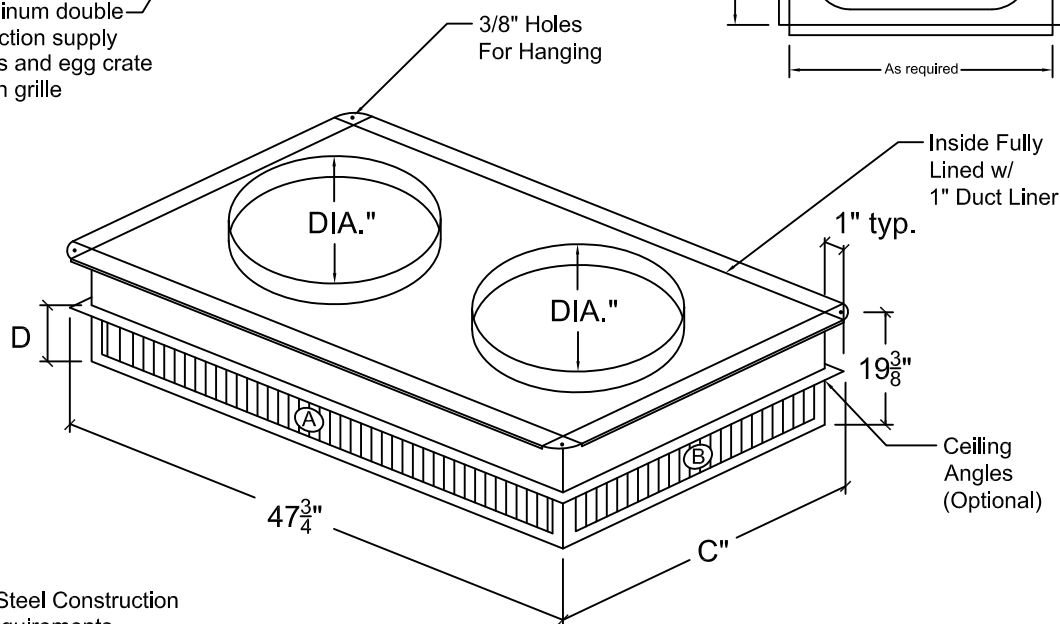
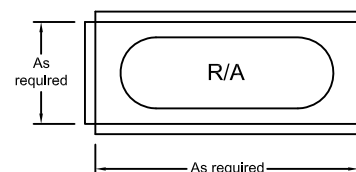
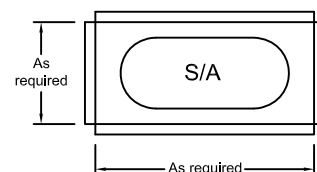


Drop Diffuser Plenums Concentric-Supply / Return



NOTES:

1. Install insulated adapter pans before A/C unit is placed on curb.
2. Field baffles may be required for balancing.
3. Concentric converter box must be field supported.



G90 Galvanized Steel Construction
Per SMACNA Requirements

QTY.	MODEL#	"A"GRILLE	"B"GRILLE	"C"	"D"	RETURN	DIA.	CFM	THROW	S.P.	N.C.	neck vel.	OPTIONS
	CO-12T	42x4	18x4	23-3/4	7-3/8	38x14	14	1,200	11-17	.21	11	1123	
	CO-16T	42x4	18x4	23-3/4	7-3/8	38x14	16	1,600	13-22	.21	16	1145	
	CO-20T	42x4	18x4	23-3/4	7-3/8	38x14	18	2,000	17-27	.21	24	1132	
	CO-30T	42x6	24x6	29-3/4	9-3/8	38x20	20	3,000	23-35	.29	36	1375	

Job Name:

Location:

Architect:

Engineer:

Contractor:

Model CO Concentric-Supply/Return

Ceiling Angles Optional

Drawn By:
CLJ

Date:
3-10-03

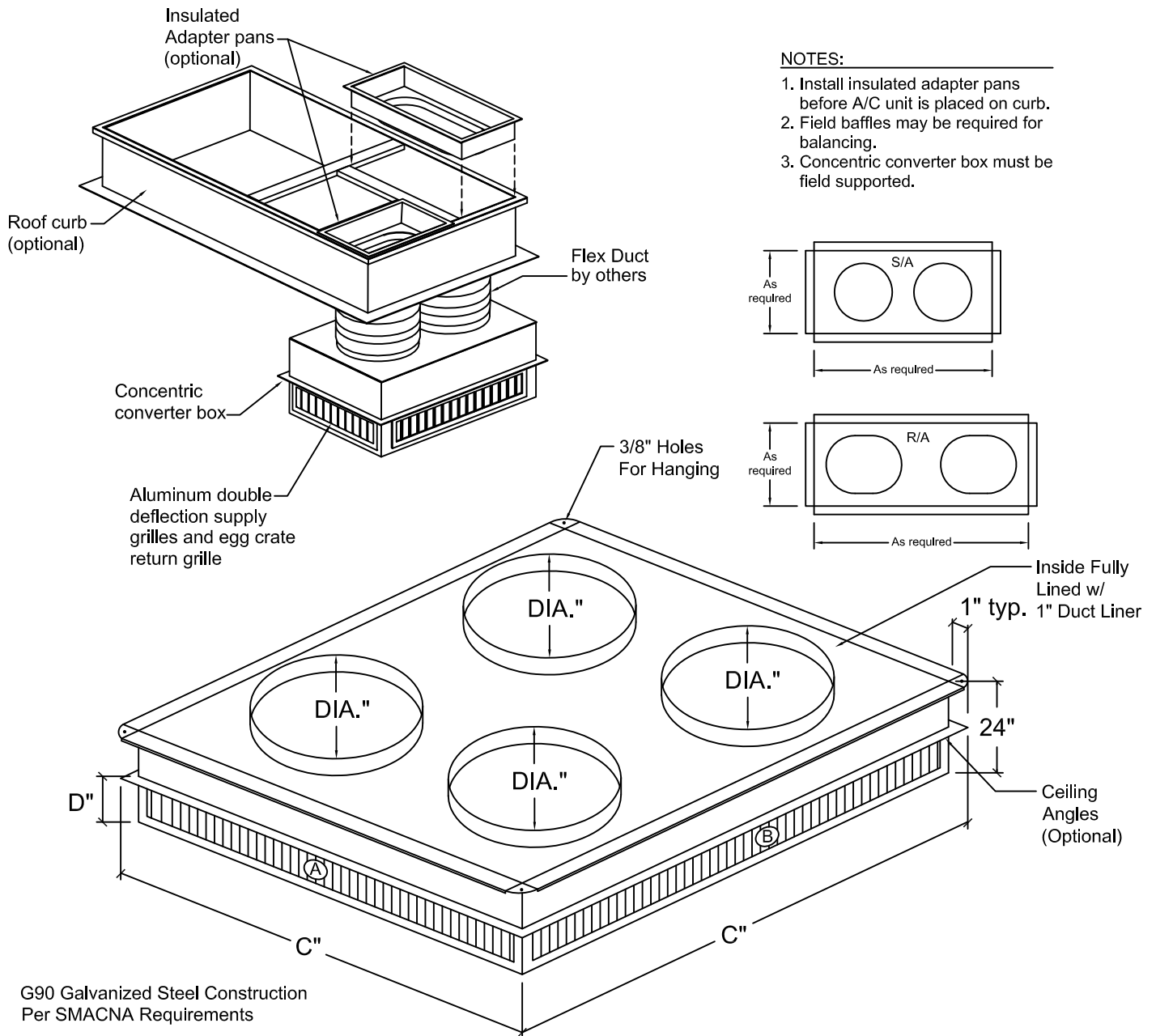
Rev. Date:
1-30-18

Rev. no.:
9

Approved By:
JAS

Dwg. no.:
H-9

**Drop Diffuser Plenums
Concentric-Supply / Return**



QTY.	MODEL#	"A"GRILLE	"B"GRILLE	"C"	"D"	RETURN	DIA.	CFM	THROW	S.P.	N.C.	neck vel.	OPTIONS
	CO-40T	42x6	42x6	47-3/4	9-3/8	36x36	18	4,000	32-55	.21	31	1132	
	CO-60T	42x8	42x8	47-3/4	11-3/8	36x36	20	6,000	35-68	.28	24	1375	
	CO-80T	42x10	42x10	47-3/4	13-3/8	36x36	20	8,000	43-80	.50	29	1834	

Job Name:	Model CO Concentric-Supply/Return		
Location:	Ceiling Angles Optional		
Architect:	Drawn By: CLJ	Date: 3-10-03	Rev. Date: 1-30-18
Engineer:	Rev. no.: 9	Approved By: JAS	Dwg. no.: H-10
Contractor:			